

THE SUITES COLLECTION

at The May Fair Hotel

To book or enquire call
UK +44 (0)20 7769 4041
US 1-888-201-1718

THE SCHIAPARELLI



VERSATILITY



MEETINGS

The Schiaparelli Suite's fabulous five-star rooms provide an exuberant setting for conventional boardroom meetings for up to eight people or less formal sofa conferences for up to eight. Equipped with a state-of-the-art Bang & Olufsen entertainment system, the Schiaparelli can be dressed for lunch, dinner or breakfast meetings, with personal security management ensuring privacy and discretion.



LAUNCHES

The Schiaparelli provides an iconic setting for launch events seeking to add a sense of confident, retro glamour to proceedings. Several recognised brands have used the space for new cosmetic launches; many are drawn to its instantly recognisable design. The Schiaparelli Suite provides a fabulously exuberant setting for fashion shoots or catwalk shows, press conferences and cocktail parties.



EVENTS

From birthdays and discreet after-parties to private fashion shows and wine tastings, the Schiaparelli Suite is one of central London's truly unique entertainment venues. Up to 50 people can be comfortably accommodated in a drinks reception, and the space can be spectacularly dressed for dinners and lunches. Security management and CCTV controls ensure that all events remain exclusive



FILMING

The flamboyant yet sophisticated style of the Schiaparelli rooms make the suite one of London's most sought after film locations. The luxury setting provides the ideal backdrop to opulent TV programming and adds additional glamour to any celebrity line-up.

THE MAY FAIR

SPECIFICATIONS



SPECIFICATIONS

- Lounge with integrated fireplace, curtain and lighting system
- Dining area with full-size eight seat dining table
- Bedroom with king size double bed
- Bathroom with limestone egg bath, LCD TV and illuminated rain shower



DIMENSIONS

- Total floor space of the Schiaparelli Suite is 138.63m² / 1492.2ft²



TECHNOLOGY

- 42" Bang & Olufsen plasma TV and Bang & Olufsen CD player in lounge and bedroom
- CCTV entry controls

These features allow you to host:

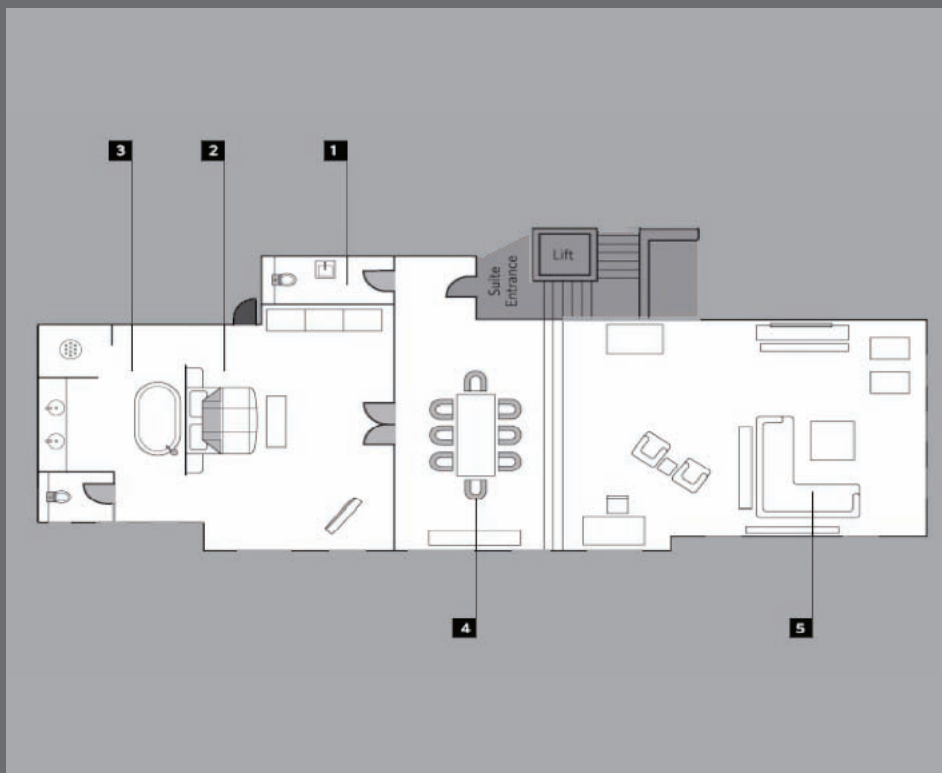
Corporate functions • Product launches • Meetings • Presentations • Filming



SERVICES

The services you would expect of a luxury five-star-hotel are merely the starting point for The May Fair Suites' experience. 24-hour butler service, airport pickup and transfer and details such as fine pressing are all readily to hand. However, the true extent of our commitment to luxury service is shown in our management, discretion and pride in meeting every guest's wish.

FLOOR PLAN



THE SCHIAPARELLI

Located on the 7th floor
138.63m² / 1492.2 ft²

1. Rest room
2. Master bedroom
3. Bathroom
4. Dining area
5. Lounge

The May Fair Hotel, Stratton Street, London W1J 8LT Telephone +44 (0)20 7769 4041 Facsimile +44 (0)20 7493 0244
Email reservations@themayfairhotel.co.uk Website themayfairhotel.co.uk

THE MAY FAIR