

# THE SUITES COLLECTION

at The May Fair Hotel

To book or enquire call  
UK +44 (0)20 7769 4041  
US 1-888-201-1718

## THE AZURE

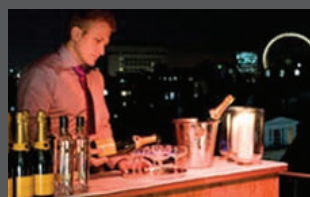


## VERSATILITY



### MEETINGS

The Azure Suite's classically elegant rooms provide a luxury setting for conventional boardroom meetings for up to eight people or less formal sofa conferences for up to eight. The five-star room comes equipped for exclusive private screenings with a state-of-the-art electronic projection screen. Choose this impressive setting for lunch, dinner or breakfast meetings, with a dedicated events manager and personal security management.



### LAUNCHES

The Azure Suite's expansive five-star surroundings add glamour and sophistication to any launch event. The beauty and versatility of the space ensure the ideal setting for fashion shoots, press conferences and cocktail parties.



### EVENTS

The Azure Suite is one of London's most elegant and sophisticated entertainment venues: opulent, spacious and hugely versatile. Up to 60 people can be comfortably accommodated in a drinks reception, and the space can be spectacularly dressed for dinners, lunches, private fashion shows or discreet after-parties. A private entrance and CCTV security controls ensure that all events remain exclusive.



### FILMING

Few London locations can convey the sophistication and style of a luxury hotel room such as the Azure. The suite's elegant features set an instant classical mood for television broadcasters and music video producers.

THE MAY FAIR

## SPECIFICATIONS



### SPECIFICATIONS

- Lounge with integrated fireplace, lighting and home cinema system
- Dining area with full-size 8 seat table
- Master Bedroom with king size double bed
- Second Bedroom with two double beds and en-suite bathroom
- Bathroom with limestone egg bath, LCD TV and illuminated rain shower
- Kitchen for entertaining



### DIMENSIONS

- Total floor space of the Azure Suite is 198.41m<sup>2</sup> / 2135.7ft<sup>2</sup>
- One interconnecting room



### TECHNOLOGY

- 42" Bang & Olufsen plasma TV and Bang & Olufsen CD player in lounge and bedroom
- CCTV entry controls

These features allow you to host:

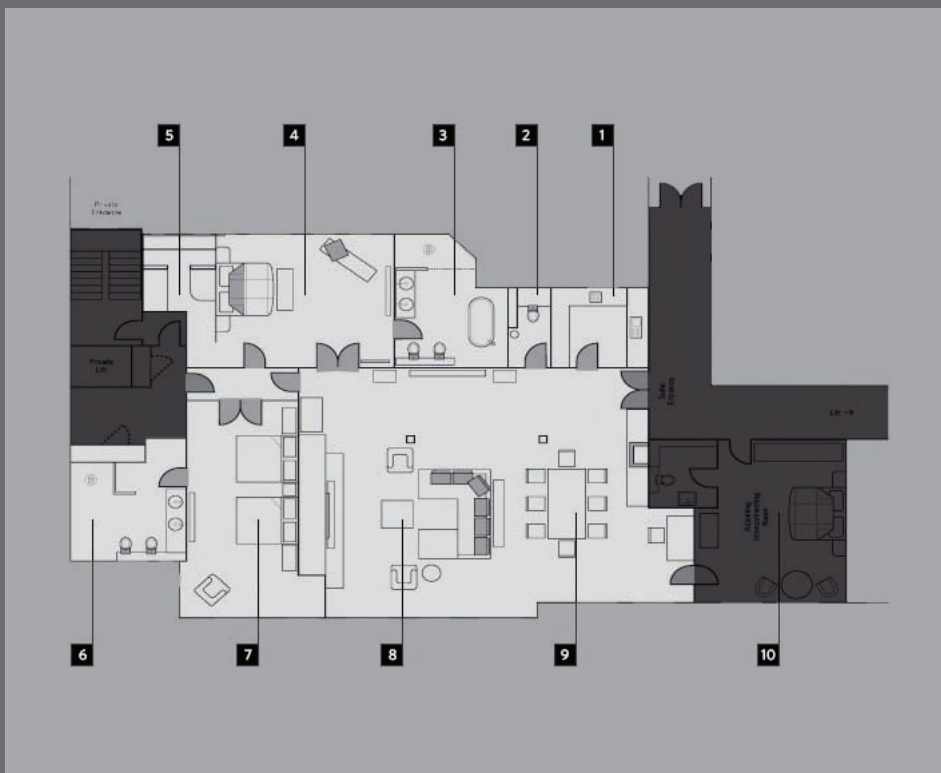
Corporate functions • Product launches • Meetings • Presentations • Filming



### SERVICES

The services you would expect of a luxury five-star-hotel are merely the starting point for The May Fair Suites' experience. 24-hour butler service, airport pickup and transfer and details such as fine pressing are all readily to hand. However, the true extent of our commitment to luxury service is shown in our management, discretion and pride in meeting every guest's wish.

## FLOOR PLAN



### THE AZURE

Located on the 7th floor  
198.41m<sup>2</sup> / 2135.7 ft<sup>2</sup>

1. Kitchen
  2. Rest room
  3. En-suite bathroom
  4. Master bedroom
  5. Dressing room
  6. Bathroom
  7. Second bedroom
  8. Lounge
  9. Dining area
  10. Adjoining room
- Private lift - exclusive ground floor access

The May Fair Hotel, Stratton Street, London W1J 8LT Telephone +44 (0)20 7769 4041 Facsimile +44 (0)20 7493 0244  
Email [reservations@themayfairhotel.co.uk](mailto:reservations@themayfairhotel.co.uk) Website [themayfairhotel.co.uk](http://themayfairhotel.co.uk)

THE MAY FAIR