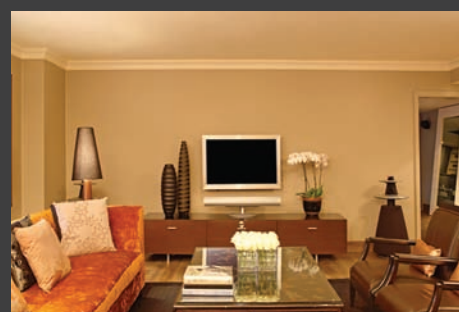


THE SUITES COLLECTION

at The May Fair Hotel

To book or enquire call
UK +44 (0)20 7769 4041
US 1-888-201-1718

THE AMBER

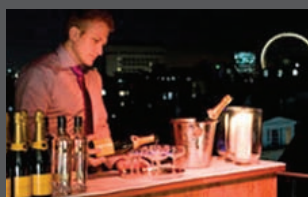


VERSATILITY



MEETINGS

The Amber Suite's richly dramatic five-star rooms provide a spectacularly elegant, state-of-the-art setting for conventional boardroom meetings for up to ten people or eight for a stylish sofa meeting. Amber's sophisticated private cinema technology and Bang & Olufsen entertainment system ensure impact for any presentation. The Amber Suite provides an impressive setting for private dining with personal security management ensuring privacy and discretion.



LAUNCHES

When a famous Corsican fragrance company sought a truly impressive, cutting-edge location for a recent product launch, the Amber Suite was the obvious choice. The space provides an exclusive setting for fashion shoots, product launches, press conferences and cocktail parties.



EVENTS

The Amber Suite is one of London's most memorable entertainment venues: opulent, dramatic and hugely versatile. Up to 50 people can be comfortably accommodated in a drinks reception, and the space can be spectacularly dressed for dinners, lunches, private fashion shows or discreet after-parties. Security management and CCTV controls ensure that all events remain exclusive.



FILMING

The Amber Suite provided the ideal setting of calm, modern sophistication for a global magazine's recent photo shoot. The suite's elegant features set an instant mood for television broadcasters and music video producers.

THE MAY FAIR

SPECIFICATIONS



SPECIFICATIONS

- Lounge with remote-controlled integrated lighting and home cinema system
- Dining area with full-size 8 seat table
- Master Bedroom with king size double bed
- Bathroom with LCD TV and illuminated rain shower
- Kitchen for entertaining



DIMENSIONS

- Total floor space of the Amber Suite is 116.88m² / 1258.08ft²
- 2 interconnecting rooms



TECHNOLOGY

- 42" Bang & Olufsen plasma TV and Bang & Olufsen CD player in lounge and bedroom
- CCTV entry controls

These features allow you to host:

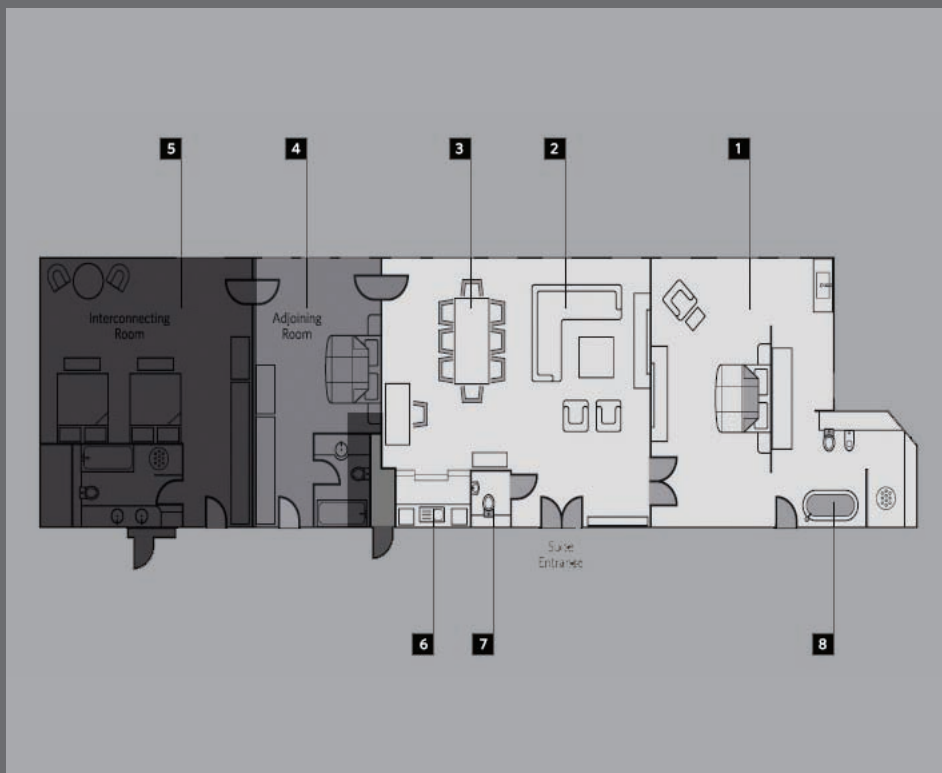
Corporate functions • Product launches • Meetings • Presentations • Filming



SERVICES

The services you would expect of a luxury five-star-hotel are merely the starting point for The May Fair Suites' experience. 24-hour butler service, airport pickup and transfer and details such as fine pressing are all readily to hand. However, the true extent of our commitment to luxury service is shown in our management, discretion and pride in meeting every guest's wish.

FLOOR PLAN



THE AMBER

located on the 4th floor
116.88m² / 1258.08 ft²

1. Master bedroom
2. Lounge
3. Dining area
4. Adjoining room
5. Interconnecting room
6. Kitchen
7. Rest room
8. En-suite bathroom

The May Fair Hotel, Stratton Street, London W1J 8LT Telephone +44 (0)20 7769 4041 Facsimile +44 (0)20 7493 0244
Email reservations@themayfairhotel.co.uk Website themayfairhotel.co.uk

THE MAY FAIR